

**SYSTEM N° 14
RENOVA DRY 16
ELEMENTS DESCRIPTION**



RNV 16

Panel for dry system; solution suitable for renovation, in fact, only 27 mm (37 with parquet prefinished boards) you can have a floor heating with good insulation and energy efficient as per DIN EN 1264 E 'in a polystyrene panel which they reside lanes "comb" for the pipes. In these lanes will rest the pipe that will be housed in special heat conducting strip (previously housed in the grooves).

Everything will transmit heat to the sheet metal panels 50x50 FL series 50 (which act as slab heating) on which you apply the ceramic coating (or parquet). PS 30 kg/m³. Height mm. 25 (10 in the tube). tube 16

Format 1000 x 500 x 25 mm, mm pitch. 167; requires no. 6 m² each heat conducting plates



LTC 16

Conductive blade 0.6 mm galvanized steel to be inserted into the appropriate lanes of the panel RNV.

Pre-cut every 250 mm

Equipped with a lane for the housing of the tube and base of 5 cm on each side so as to be able to transmit the heat to the radiating body formed by two sheets of sheet metal series FL 50 coupled together by means of double-sided adhesive (which act as a screed).

Size mm. 997 x 120 x 0.4

Average predict in quantities of 6 per m²



BDM 24

polyethylene sheet resting above the panel in order to create a barrier to the noise that could be generated by direct contact between the lamellae of the heat conducting LTC and foil sheet heating of the series-FLB FLN thickness of 150 microns. Pack 400 sq.m.

**SYSTEM N° 14
RENOVA DRY 16
ELEMENTS DESCRIPTION**



FLN

heating load distribution plate, galvanized rounded 1mm. function of substrate heating and load distribution. FLT 50 rests directly on top of the tube (housed in the heat conducting strip series LT), in such a way as to form a flat layer, after it proceeds by removing the film FLT 50B which will go to attach to FLT 50 creating a single body extremely resistant to mechanical stress (to be applied on top and offset). Then you can apply any coating, ceramic flooring etc.. The plate has rounded corners to prevent accidental breakage of the pipe during laying
On average, predict a 60% measuring 50x50 and 25x50 40%. Height mm. 0.8



CPA 15/6

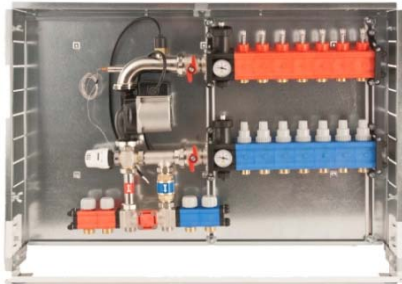
perimeter band of flexible polyethylene foam, ensures the thermal expansion of the screed. Adhesive strip on the whole rear side to more easy installation, with a strip of PE welded to avoid acoustic bridges due to infiltration down the slab. Height mm. 150 thickness mm. 6



MRN 16/20/100

multilayer pipe rolls naked Pexb / Al / Pexb - Uni En Iso 21003-10 ° bar/95 - Class 2 as follows:
The best plastic material adapted to withstand high temperatures, cross-linked polyethylene type b (PE-Xb) inside and outside,
aluminum alloy 8006, stronger than other suits reduced thickness allowing high flexibility;
Welding Aluminum TIG butt that allows for maximum reliability on the bends, thanks to its special characteristics of uniformity and strength.
16 mm diameter pipe, wall thickness, mm. 2; mm thick aluminum. 0.20; roll ml. 100

**SYSTEM N° 14
RENOVA DRY 16
ELEMENTS DESCRIPTION**



DUOFIX

control unit **only warm** at fixed point to be recessed in the wall for distribution both high and low temperatures; composed of that elements:

steel cabinet; polyamide manifold (reinforced with glass fiber) for low temperature, polyamide manifold (reinforced with glass fiber) for high temperature (2 ways for radiators) thermostat security TCS 47; three ways valve BUL 57 with thermostatic control TCB 34; double by pass valve; n. 2 thermometer TB 12; n. 2 automatic airvent; n. 2 filling valve+



DUOKLIM OW

climate control unit to be recessed in the wall for distribution both high and low temperatures; composed of that elements:

steel cabinet; polyamide manifold (reinforced with glass fiber) for low temperature, polyamide manifold (reinforced with glass fiber) for high temperature (2 ways for radiators) thermostat security TCS 47; three ways valve BUL 57 with motorized actuator AXM 117 (230 V) TCB 34; double by pass valve; n. 2 thermometer TB 12; n. 2 automatic airvent; n. 2 filling valve; ; a 3 speed Pump Grundfos UPS 25/55 Low Energy;

Package including only warm separately delivered

- NRT 114 control unit (to be wall installed ; don't need thermostat because that has this function)
- EGT 301 external probe (to be installed in the outside wall of the house, possibly at north)
- EGT 354 flow sensor (to be installed inside cabinet of DUOKLIM OW)



CIM

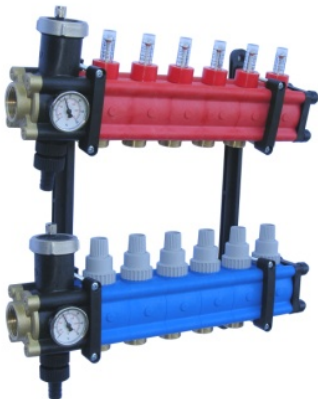
steel sheet cabinet for manifold with mobile guides . Adjustable in depth from 110 to 150 mm. Lock with screwdriver. Suitable for the containment of manifolds in the range. Available in widths of 40, 50, 60, 70, 85, 100, 120, 130

**SYSTEM N° 14
RENOVA DRY 16
ELEMENTS DESCRIPTION**



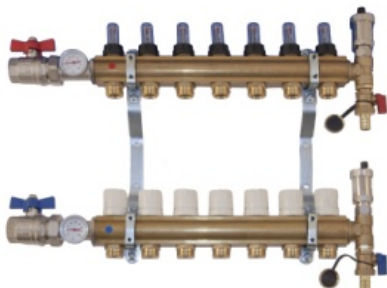
POLIEKO

modular manifold 1" in polyamide reinforced with glass fiber, thermostatic valve on the return, with flow rate, with n. 2 thermometers, n. automatic 2 automatic airvent, n. 2 exhaust terminals, and n. 2 brackets.



POLISWELL

modular manifold 1" ¼ in polyamide reinforced with glass fiber, thermostatic valve on the return, with flow rate, with n. 2 thermometers, n. automatic 2 automatic airvent, n. 2 exhaust terminals, and n. 2 brackets.



OTTOMATIC

brass manifold 1" thermostatic valve on the return, with flow rate, with n. 2 thermometers, n. automatic 2 automatic airvent, n. 2 exhaust terminals, and n. 2 brackets.

**SYSTEM N° 14
RENOVA DRY 16
ELEMENTS DESCRIPTION**



OTTOFIX MONO

UHM mixture system. This control center is designed for mixing the primary supply water with the under floor heating return water into a required temperature for under floor heating systems. Main components: thermostat security TCS 47; three ways valve BUL 57 with motorized actuator AXM 117 (230 V) TCB 34; double by pass valve; n. 2 thermometer TB 12; n. 2 automatic airvent; n. 2 filling valve; Pump Grundfos a 3 speed brand WILLO
OTTOMATIC brass manifold 1" thermostatic valve on the return, with flow rate, with n. 2 thermometers, n. automatic 2 automatic airvent, n. 2 exhaust terminals, and n. 2 brackets.
CIM steel sheet cabinet for manifold with mobile guides . Adjustable in depth from 110 to 150 mm. Lock with screwdriver. Suitable for the containment of manifolds in the range. Available in widths of 40, 50, 60, 70, 85, 100, 120, 130



APX

fittings for connection of polyethylene pipes (PE Xa or PE RT) to the manifolds of the range swell system



RM

fittings for connection of multilayer pipes (MRN) to the manifolds of the range swell system



TEP

actuator for electrical control of the manifold, 230 V, normally closed 2 or 4 wire, (with a limit switch for an additional electrical equipment like a boiler, a pump, or other.

**SYSTEM N° 14
RENOVA DRY 16
ELEMENTS DESCRIPTION**



TE 411

electronic room thermostat **WC** white with: big display graphic icons matched to the front buttons for choice of mode operation. Choice Celsius or Fahrenheit. Powered by 2 AA 1.5 V alkaline. Battery life more than 4 years, an indication of insufficient charging of batteries. Max temp 45°C Dimensions 135 x 83 x 21



CP 18

curve support at 90° in polyamide reinforced with glass fiber. No scratch pipe



SWC 30

protective liquid for underfloor radiant system. Balanced composition of corrosion inhibitors with anti scaling action, also generates a healing effect against lime deposits or biotic, and also to corrosion residues may be present in the plant. Also generate an algostatic effect. Compatible with all metals and plastic elastomers. Biodegradable. Dosage 1 kg every 200 litres of water in the system.