

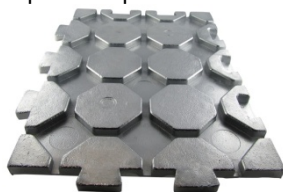
**SYSTEM N° 16
ANHIDROS 12
ELEMENTS DESCRIPTION**



BDM 24

polyethylene sheet resting above the panel in order to create a barrier to the noise that could be generated by direct contact between the lamellae of the heat conducting LTC and foil sheet heating of the series-FLB FLN thickness of 150 microns. Pack 400 sq.m.

Super Slim per tubo 12



SS

panel last generation super slim, ideal for renovation but also applicable to the new wall or ceiling extremely reduced height, in fact, with the use of specific preparations for self-leveling screeds quick hardening it is possible to realize a system in only 20 mm. (we only use products recommended by us; info c / o ns. technical department). tube used 12x2 step 10; Euroclass E; $\lambda D = 0.034 \text{ W / mK}$; load resistance $> 250\text{kPa}$ UNI EN 826 usable area $1200 \times 600 \text{ mm}$. (0.72 m²). Composed of expanded polystyrene EPS 250, RD m • K / W EN 1264 0.35, water absorption in the long term (UNI EN 12087 $<5\%$; Stability dim. Under specified conditions of temperature and humidity (UNI EN 1604) $\pm 10\%$.

possibility of having it in the version with double-sided tape below and / or coated with eg aluminate mm height. 18; conf. 10.80 m²



CPA 15/6

perimeter band of flexible polyethylene foam, ensures the thermal expansion of the screed. Adhesive strip on the whole rear side to more easy installation, with a strip of PE welded to avoid acoustic bridges due to infiltration down the slab. Height mm. 150 thickness mm. 6

**SYSTEM N° 16
ANHIDROS 12
ELEMENTS DESCRIPTION**



PE-Xa 12x2

crosslinked polyethylene pipe with peroxide method, equipped with oxygen barrier evoH. Raw material is high density polyethylene (HDPE) 951 kg/m³, this pipe has a lower degree of crystallization which makes it more flexible than that of the competitors. The pipe is crosslinked immediately after the exit from the extrusion head by heating with an infrared radiation at high power and short wavelength with a degree >75%.

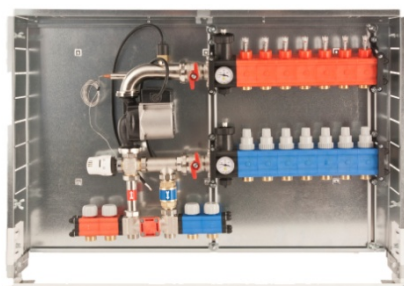
Certifications: IIP; CSTB; SKZ; IQNET; AENOR

DIN EN 12318-2 (former DIN 16892) compliant in accordance to ASTM F876 / F877.



PE-RT 12x2

polyethylene pipe with oxygen barrier evoH, this particular type of extrusion allows the high malleability of the pipe also in winter. Raw material is polyethylene with high thermal resistance with evoH oxygen barrier. According to DIN EN ISO 22391. IIP n° 261 / 2011 – Rev. 0 certifies that the product described complies with requirements indicated and IIP specified in the general regulations and special rules applicable and evaluated against the requirements document Sincert RT06



DUOFIX

control unit **only warm** at fixed point to be recessed in the wall for distribution both high and low temperatures; composed of that elements:

steel cabinet; polyamide manifold (reinforced with glass fiber) for low temperature, polyamide manifold (reinforced with glass fiber) for high temperature (2 ways for radiators) thermostat security TCS 47; three ways valve BUL 57 with thermostatic control TCB 34; double bypass valve; n. 2 thermometer TB 12; n. 2 automatic airvent; n. 2 filling valve+

**SYSTEM N° 16
ANHIDROS 12
ELEMENTS DESCRIPTION**



DUOKLIM OW

climate control unit to be recessed in the wall for distribution both high and low temperatures; composed of that elements:

steel cabinet; polyamide manifold (reinforced with glass fiber) for low temperature, polyamide manifold (reinforced with glass fiber) for high temperature (2 ways for radiators) thermostat security TCS 47; three ways valve BUL 57 with motorized actuator AXM 117 (230 V) TCB 34; double by pass valve; n. 2 thermometer TB 12; n. 2 automatic airvent; n. 2 filling valve; ; a 3 speed Pump Grundfos UPS 25/55 Low Energy;

Package including only warm separately delivered

- NRT 114 control unit (to be wall installed ; don't need thermostat because that has this function)
- EGT 301 external probe (to be installed in the outside wall of the house, possibly at north)
- EGT 354 flow sensor (to be installed inside cabinet of DUOKLIM OW)



CIM

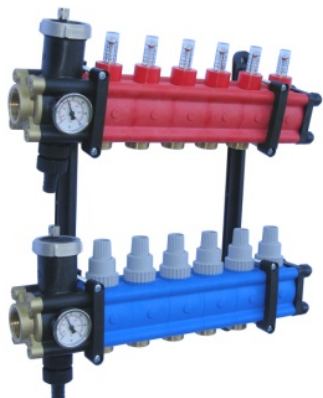
steel sheet cabinet for manifold with mobile guides . Adjustable in depth from 110 to 150 mm. Lock with screwdriver. Suitable for the containment of manifolds in the range. Available in widths of 40, 50, 60, 70, 85, 100, 120, 130



POLIEKO

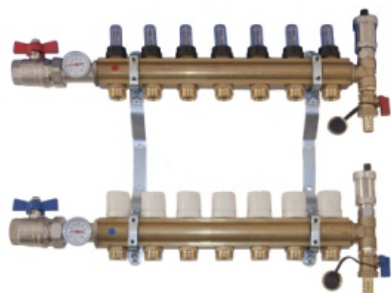
modular manifold 1" in polyamide reinforced with glass fiber, thermostatic valve on the return, with flow rate, with n. 2 thermometers, n. automatic 2 automatic airvent, n. 2 exhaust terminals, and n. 2 brackets.

**SYSTEM N° 16
ANHIDROS 12
ELEMENTS DESCRIPTION**



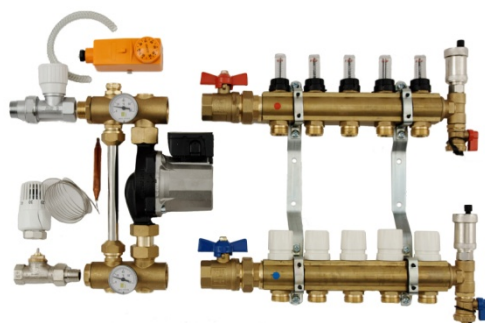
POLISWELL

modular manifold 1" ¼ in polyamide reinforced with glass fiber, thermostatic valve on the return, with flow rate, with n. 2 thermometers, n. automatic 2 automatic airvent, n. 2 exhaust terminals, and n. 2 brackets.



OTTOMATIC

brass manifold 1" thermostatic valve on the return, with flow rate, with n. 2 thermometers, n. automatic 2 automatic airvent, n. 2 exhaust terminals, and n. 2 brackets.



OTTOFIX MONO

UHM mixture system. This control center is designed for mixing the primary supply water with the under floor heating return water into a required temperature for under floor heating systems. Main components: thermostat security TCS 47; three ways valve BUL 57 with motorized actuator AXM 117 (230 V) TCB 34; double by pass valve; n. 2 thermometer TB 12; n. 2 automatic airvent; n. 2 filling valve; Pump Grundfos a 3 speed brand WILO

OTTOMATIC brass manifold 1" thermostatic valve on the return, with flow rate, with n. 2 thermometers, n. automatic 2 automatic airvent, n. 2 exhaust terminals, and n. 2 brackets.

CIM steel sheet cabinet for manifold with mobile guides . Adjustable in depth from 110 to 150 mm. Lock with screwdriver. Suitable for the containment of manifolds in the range. Available in widths of 40, 50, 60, 70, 85, 100, 120, 130

**SYSTEM N° 16
ANHIDROS 12
ELEMENTS DESCRIPTION**



APX

fittings for connection of polyethylene pipes (PE Xa or PE RT) to the manifolds of the range swell system



RM

fittings for connection of multilayer pipes (MRN) to the manifolds of the range swell system



TEP

actuator for electrical control of the manifold, 230 V, normally closed 2 or 4 wire, (with a limit switch for an additional electrical equipment like a boiler, a pump, or other.



TE 411

electronic room thermostat **WC** white with: big display graphic icons matched to the front buttons for choice of mode operation. Choice Celsius or Fahrenheit. Powered by 2 AA 1.5 V alkaline. Battery life more than 4 years, an indication of insufficient charging of batteries. Max temp 45°C Dimensions 135 x 83 x 21



CP 18

curve support at 90° in polyamide reinforced with glass fiber. No scratch pipe

**SYSTEM N° 16
ANHIDROS 12
ELEMENTS DESCRIPTION**



SWC 30

protective liquid for underfloor radiant system. Balanced composition of corrosion inhibitors with anti scaling action, also generates a healing effect against lime deposits or biotic, and also to corrosion residues may be present in the plant. Also generate al algostatic effect. Compatible with all metals and plastic elastomers. Biodegradable. Dosage 1 kg every 200 litres of water in the system.

Natural anhydrite screed advised to:

